

Victorian Notice to Mariners

The following Notice to Mariners is published for general information.

Australia – Victoria

No. 074 (T) of 2026

EAST BASS STRAIT – McLOUGHLINS BEACH TO SEASPRAY OFFSHORE SURVEY OPERATIONS

Date: 11 FEBRUARY TO 1 JULY 2026

Details: Notice to Mariners No. 023 (Temporary) of 2026 is referred and cancelled. Mariners are advised of bathymetric and geophysical survey operations to be undertaken by EGS Survey Pty Ltd off the coast of Gippsland, between McLoughlin's Beach and Seaspray Beach in State and Commonwealth waters up to 56NM offshore.

The vessel 'Investigator' will be surveying in waters less than approximately 15m and within State waters 3NM offshore. Dates for State (3NM) waters works is March to early April. Vessel 'PMG Emerald' will be conducting survey operations within the delimited area up to 56NM offshore. Both vessels will have towed array of survey equipment and tail buoy 500m behind the vessel.

State (3NM) waters are covered by the following points (operations March/early April):

Point	Latitude (WGS84)	Longitude (WGS84)
HSW1	38° 35.90' S	146° 55.71' E
HSW2	38° 23.05' S	147° 10.92' E
HSW3	38° 37.792' S	146° 58.813' E
HSW4	38° 24.243' S	147° 15.025' E

The complete area of operations is bound by the following points and covers state and Commonwealth waters:

Point	Latitude (WGS84)	Longitude (WGS84)
HSW1	38° 35.90' S	146° 55.71' E
HSW5	39° 9.53' S	147° 53.77' E
HSW6	38° 48.17' S	148° 14.91' E
HSW2	38° 23.05' S	147° 10.92' E

Figure 1 (over page) shows the location and extent of the survey operations within State and Commonwealth waters. Figure 2 (over page) shows the tow array.

The vessels will display appropriate lights and shapes for a vessel restricted in its ability to manoeuvre and will monitor VHF Channel 16.

Mariners are advised to navigate with caution in the area and maintain a 1km distance, given the distance of the towed array is 500m behind the vessels.

AUS Charts and Publications Affected: AUS357, AUS181, AU439146, AU439147

Victorian Charts and publications affected: Nil

Emergency Contact details: PMG Emerald operator can be contacted on VHF 16, vessel call sign 9V7618, or alternatively contact, Jeff Davey, mobile: +61 418 536 368, email:

jeff@pacificmarinegroup.com.au

MV Investigator operator can be contacted on VHF 16, vessel call sign VJN4448, or alternatively contact, Jake Cripps, mobile: +61 (0)448403176, email: jakecripps176@gmail.com

Further Notice: This Notice is self-cancelling. No further Notice will be issued.

KIRSTY HARRIS
Senior Safety Assurance Officer
Date: 02/02/2026

Figure 1: Survey operation area in State and Commonwealth waters

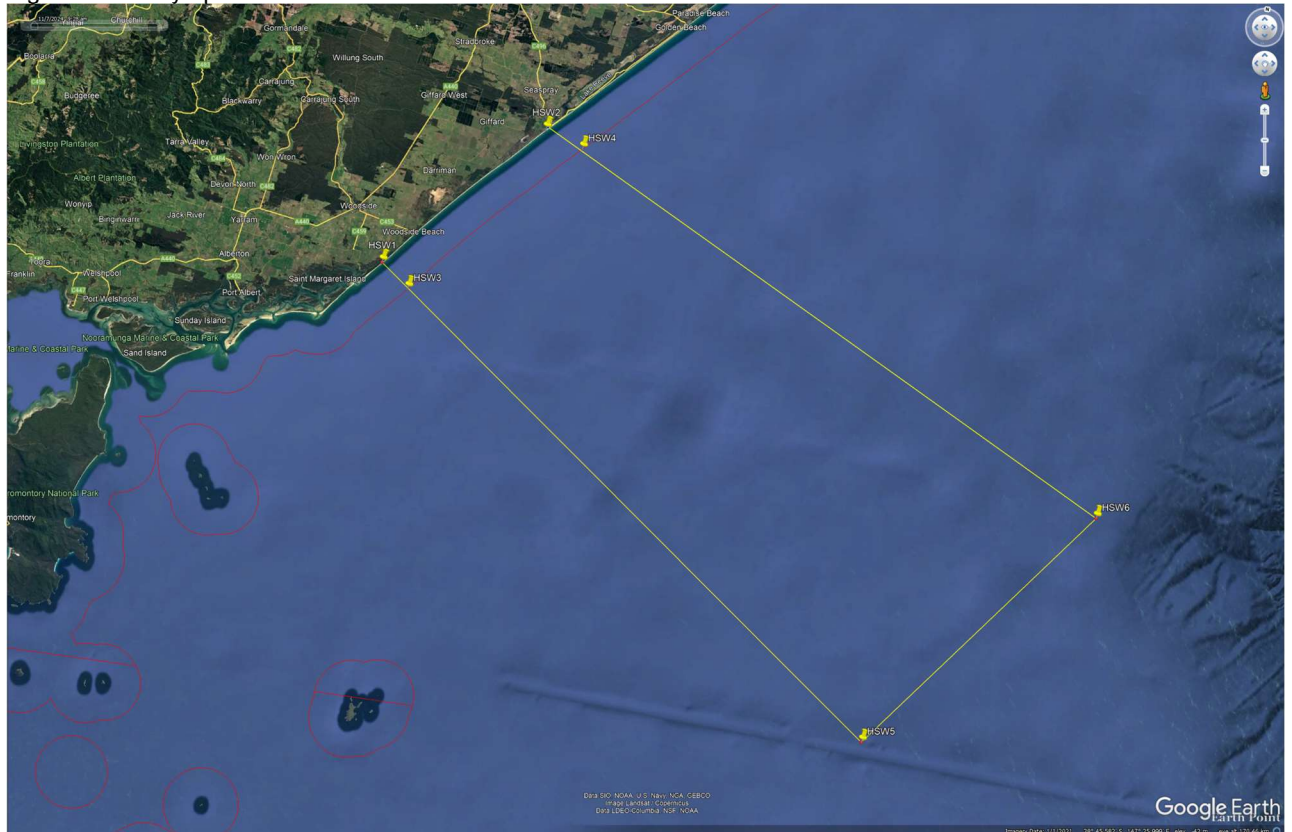


Figure 2: Tow array, with tail buoy 500m behind vessel

