

Victorian Notice to Mariners

The following Notice to Mariners is published for general information.

Australia – Victoria
No. 137 (T) of 2026
BASS STRAIT – EAST GIPPSLAND – GOLDEN BEACH
Geophysical Survey

Date: 24 MARCH TO 10 MAY 2026

Details:

Mariners are advised of offshore geophysical survey operations to be undertaken by GB Energy (Vic) Pty Limited for the planned Golden Beach Energy Storage Project, off the coast of Gippsland, near Golden Beach in State waters.

The operations will be undertaken by the vessel Bass Trek (Vessel ID: MSV7140) which will be engaged in the offshore survey activities and will be towing survey equipment. A smaller vessel "Survey 1" (Vessel ID: 30195QC) will conduct the geophysical survey and will be towing survey equipment in near shore waters. Both vessels will be monitoring VHF channel 16.

The area of operation is bounded by the following coordinates (refer Figure 1 Area of operation):

Point	Latitude (DMS)	Longitude (DMS)
1.	147° 21' 09.83" E	38° 15' 02.84" S
2.	147° 23' 08.00" E	38° 13' 30.33" S
3.	147° 26' 40.17" E	38° 14' 08.51" S
4.	147° 26' 40.12" E	38° 14' 59.56" S
5.	147° 25' 19.76" E	38° 16' 01.19" S

Mariners are advised to navigate with caution in the vicinity and are requested to maintain a clearance of 500 meters from both vessels. The vessels will display appropriate day shapes and lights when under restricted ability to manoeuvre.

AUS Charts and Publications Affected: AUS357, AU439147

Victorian Charts and publications affected: Nil

Further Notice: This Notice is self-cancelling. No further Notice will be issued.

Further information: 'Bass Trek' operator can be contacted on VHF 16, vessel call sign VKV6646, MMSI 503412600, phone: +61 (0) 428 388 069.

'Survey 1' operator can be contacted on VHF 16, vessel call sign 30195QC, MMSI 503018620, phone: +61 (0) 415 833 513. For further information on the Project contact: email info@gbenergy.com.au, phone 1800 423 637.



KIRSTY HARRIS

Senior Safety Assurance Officer

Date: DD/MM/2026

Figure 1 – Area of operation

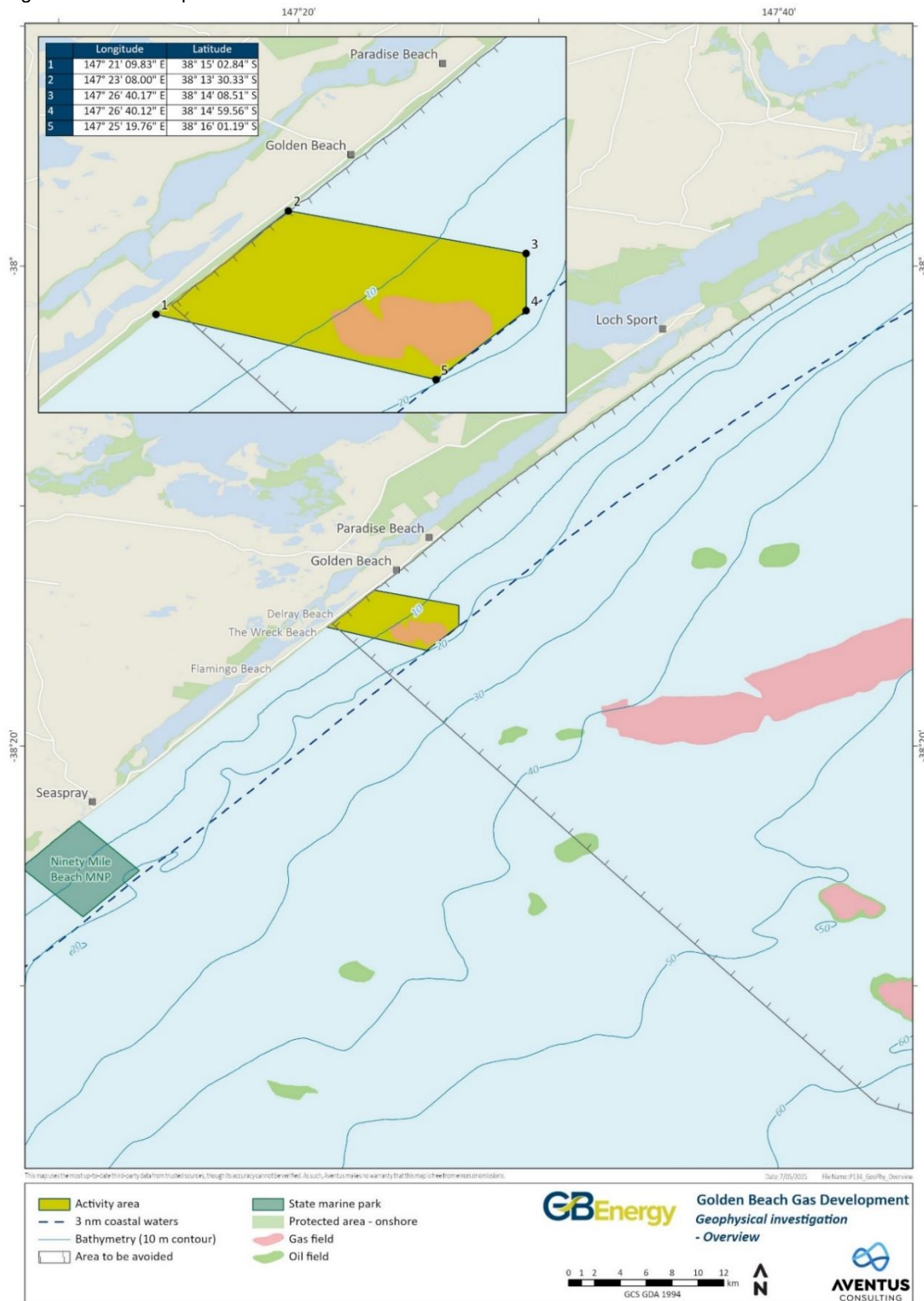


Figure 2: Vessel - Bass Trek



Figure 3: Vessel – Survey 1

